

The Catering team offer an attractive, home cooked menu with plenty of choice ,variety and is locally sourced.

Residents can have a cooked breakfast each morning if they wish and there is a supper trolley for an evening snacks and milky drinks before bed!

The domestic staff keep the Home clean, free from odours and offer a comprehensive laundry service. We have a 'handyman' who works 5 days a week to maintain the property, rooms and equipment.

A hairdresser visits weekly, rates are very reasonable and a chiropodist visits the Home every 6 weeks. Dental services can be arranged and an optician visits in house for eye tests and prescription changes to glasses etc.

All rooms are tastefully coordinated, simply furnished and well maintained with a digital TV, Residents can add their own "personal touch" if they wish. Profiling beds and dynamic replacement mattresses are in each room as part of the care fees. Wi fi is available in all rooms.

Respite, palliative, short and long term care are all accommodated at Wellington House.

You are invited to stay for a day or for a meal with your family to help you to make an informed choice!

Enquiries and visits at any time are most welcome.(Browse our latest CQC report at [www.cqc.org.uk](http://www.cqc.org.uk)-

or available to read in full at Wellington House)

## Wellington House Nursing Home



*Trust in us to Care for You*

*Because Quality Care Matters*

**82-84 Kirkgate  
Shipley  
BD18 3LU**

**Directors: Ms A J Pitts, RN  
Mrs S E Phillips, RN/ONC**

**Tel:: 01274 531244**

**Fax: 01274 596573**

**E-mail: [info@wellingtonhousenursinghome.co.uk](mailto:info@wellingtonhousenursinghome.co.uk)**

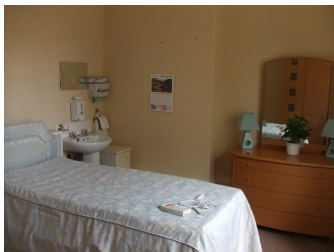
**Web: [www.wellingtonhousenursinghome.co.uk](http://www.wellingtonhousenursinghome.co.uk)**

**Please Note: we are a no smoking nursing home**

# Wellington House Nursing Home

Wellington house is a beautiful Victorian property and was established as a nursing home in 1988.

Following an extensive and sympathetic extension, the Home is registered to care for the nursing needs of 30 adult residents with a physical disability. Jane and Sally Pitts, the Directors, took over the business in 2006. They are both registered nurses with a wealth of experience- Jane has been the Registered Manager of Wellington House since 1996 and Sally's career has been primarily at the BRI in senior positions in the trauma and orthopedic unit.



**'Trust in us to care for you-because Quality Care matters'**

Our mission statement encompasses both our core values and philosophy of care.

Wellington House has an excellent reputation within the local community and Health Centre's for our professional high standards and the quality of our nursing care.

The Care Quality Commission visited on May 1st 2018 . The inspection was unannounced. We are very pleased to have been awarded a 'Good' rating. The full inspection report is online, copies are also available in the Home to read.



We are proud of our skilled, friendly, hardworking and dedicated staff, many of whom have been with us for years. They are a well trained Team and are supported by the senior nursing staff and The Directors.

Residents are cared for in a friendly and homely environment , with individualized Care Plans to encompass their Nursing Needs.

We employ a Recreation coordinator for entertainment and regular activities